

Planning Committee

10 am, Thursday 15 May 2014

Achieving Excellence Performance Report July to December 2013

Item number	8.2
Report number	
Executive/routine	
Wards All	

Executive summary

This report provides an update on Council performance against Planning strategic outcomes. The report is presented in line with the update of Council's Performance Framework approved by Corporate Policy and Strategy Committee in December 2013, and contains analysis of performance covering the period from July to December 2013.

Links

Coalition pledges
Council outcomes CO3
Single Outcome Agreement

Report

Name of report

Recommendations

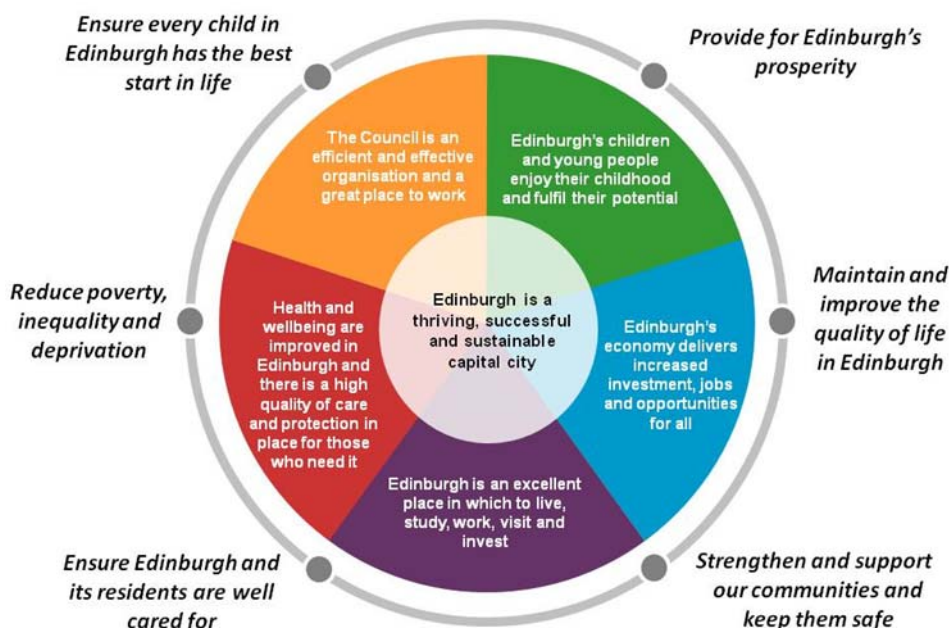
- 1.1 It is recommended that the Planning Committee note the performance for the period from July to December 2013 and agree actions for improvement.

Background

- 2.1 The '[Review of political arrangements](#)' report to the City of Edinburgh Council on 24 October 2013 approved a number of revisions to committee business. It was agreed by Council that performance monitoring, review and scrutiny will be led by the Executive Committees on a bi-annual basis with oversight by the Corporate Policy and Strategy Committee.
- 2.2 This report provides an update on performance for planning for the period July to December 2013.

Main report

- 3.1 The Council's Performance Framework is set out in the diagram below and takes account of the Council's vision, five strategic outcomes and the six key Capital Coalition pledges.



- 3.2 This report provides performance update under the Council outcome shown above: Edinburgh is an excellent place to live, study, work, visit and invest.
- 3.3 The Corporate Dashboard in [Appendix 1](#) provides an overview of performance in meeting these Council outcomes from July to December 2013. Further detailed information by indicator is provided in [Appendix 2](#).

Measures of success

- 4.1 This report provides detail on Council performance against delivery of planning outcomes for the period from July to December 2013.

Financial impact

- 5.1 The financial impact is set out within the Council's Performance Framework.

Risk, policy, compliance and governance impact

- 6.1 Risk, policy, compliance and governance impact is integrated within the Council's Performance Framework.

Equalities impact

- 7.1 Reducing poverty, inequality and deprivation is integrated within the Council's Performance Framework.

Sustainability impact

- 8.1 The sustainability impact is set out within the Council's Performance Framework.

Consultation and engagement

- 9.1 Priorities and outcomes have been developed in consultation with stakeholders.

Background reading / external references

The [Council's Performance Framework](#) approved by Corporate Policy and Strategy Committee on 3 December 2013.

Mark Turley

Director of Services for Communities

Contact: Jo McStay, Business Intelligence Manager

E-mail: jo.mcstay@edinburgh.gov.uk | Tel: 0131 529 7950

Links

Coalition pledges

Council outcomes CO3

**Single Outcome
Agreement**

Appendices

[Appendix 1: Corporate Dashboard](#)




[Appendix 2: Corporate Dashboard Indicator Detail](#)

Appendix 1: Dashboard July - December 2013

Edinburgh is an excellent place in which to live, study, work, visit and invest

Directors notes:




The Planning Service is progressing with the preparation of the new Local Development Plan to guide place making activity as development proposals are submitted. The growth in the number of applications for planning applications and building warrants is evidence of an upturn in development activity and an opportunity to use new investment in the City's buildings and spaces to deliver improved quality. In parallel, the consolidation of planning guidance for developers has seen new design guidance approved and draft street design guidance prepared during the past year.

	Jul-Sep 13	Oct-Dec 13	Target
<u>% of non-householder planning applications dealt with within 2 months</u>	71.6%	76% 	75%
<u>% of householder planning applications dealt with within 2 months</u>	86.9%	89.9% 	90%
<u>% of major applications decisions within target</u>	85.7%	54.5% 	80%




Appendix 2: Corporate Dashboard Indicator Detail

July – December 2013

3. Edinburgh is an excellent place to live, study, work, visit and invest

Indicator	Jul-Sep 13	Oct-Dec 13	Target	Status	Latest Note
% of non-householder planning applications dealt with within 2 months	71.6%	76%	75%		
% of householder planning applications dealt with within 2 months	86.9%	89.9%	90%		89.9% of householder applications were processed within 2 months in the third quarter. This just missed the 90% target. Extra resources have now been put in place and performance is improving to ensure future targets are met.
% of major applications decisions within target	85.7%	54.5%	80%		<p>In terms of major applications, 11 were determined in the 3rd quarter. 7 of these had processing agreements and 5 met the target committee date. One of these missed the target committee date because the main chamber was not available on the expected committee date and this was needed for webcasting.</p> <p>Of the remaining 4 applications, only 1 met the statutory 4 month determination period. 2 went to Committee in the 4 month target period but the decisions were issued after the 4 month period because legal agreements had to be concluded with the applicants and so the targets were missed.</p> <p>Therefore out of the 11 applications, 6 met the target dates giving a percentage of 54.5%. If we include the 3 that were outwith our control due to rooms and legal agreements, this would have brought the figure up to 81.8% which would have met the 80% target. However, as it stands, the target was not met.</p>

Key

	PI is below target and tolerances.		PI is below target but within tolerances.		On target.
--	------------------------------------	---	---	---	------------

[Back to corporate dashboard](#)